




2015

Corn Trial

Previous crop : Alfalfa
 Seed : Agventure Spangler (Roundup ready GMO)
 Crop : Corn

Date	Treated	Control
5/20/2015	Pre emerge herbicide sprayed. An hydrous ammonia separate pass before sowing, 4 inches deeper than seeds	Pre emerge herbicide sprayed. An hydrous ammonia separate pass before sowing, 4 inches deeper than seeds
5/23/2015	Applied BioMiracle Soil+	
5/23/2015	Applied BioMiracle Seed+	
5/23/2015	Seeds sowed	Seeds sowed
6/6/2015	Sprayed herbicide. Glyphosate 24 oz / acre	Sprayed herbicide. Glyphosate 24 oz / acre
6/6/2015	Ammonium Sulphate 2 lbs / acre	Ammonium Sulphate 2 lbs / acre
6/10/2015	Sprayed BioMantra Root+	
6/17/2015	Sprayed Roundup	Sprayed Roundup
6/17/2015	Ammonium Sulphate 2 lbs / acre	Ammonium Sulphate 2 lbs / acre
7/5/2015	Sprayed BioMantra Root+	



 Agrilife

Week 1 – After sowing

-

05/30/2015



Week 4

-

06/03/2015

		Treated			Control	
		Plant 1	Plant 2		Plant 1	Plant 2
a. Length of Roots		8	7		3	6
b. Length of Plant		16	15		14	14
c. Number of Leaves		7	6		6	6
d. Diameter of Stem		1	1		< 1	< 1
e. Width of Leaves		1.75	1.75		1.5	1.75
f. Color of leaves		Green	Green		Light Green	Light Green



Week 6

-

06/19/2015

	Treated		Control	
	Plant 1	Plant 2	Plant 1	Plant 2
a. Length of Roots	13	12	8	9
b. Length of Plant	38	36	38	34
c. Number of Leaves	10	10	10	10
d. Diameter of Stem	3	2.75	2.75	2.75
e. Width of Leaves	3.75	3.75	3.75	3.5
f. Color of leaves	No noticeable difference			



Life

Week 8

-

07/16/2015

		Treated			Control	
		Plant 1	Plant 2		Plant 1	Plant 2
a. Length of Roots		Not Gathered				
b. Length of Plant		57	64		50	62
c. Number of Leaves		14	15		12	13
d. Diameter of Stem		3.5	4.25		3	3.5
e. Width of Leaves		4.25	4.75		3.8	4.5
f. Color of leaves		Dark Green			Light Green	



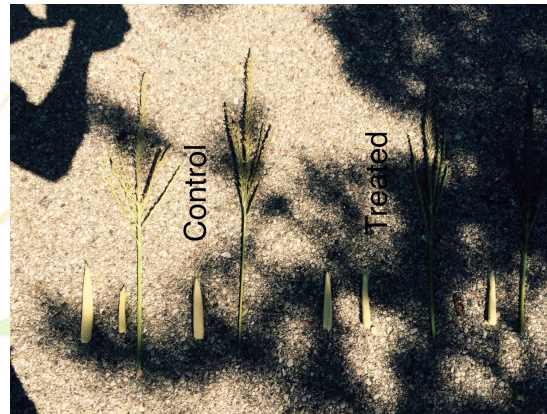
AgriLife

Week 10

-

07/31/2015

		Treated			Control	
		Plant 1	Plant 2		Plant 1	Plant 2
a. Length of Roots		Not Gathered				
b. Length of Plant		108	100		103	101
c. Number of Leaves		15	15		14	13
d. Diameter of Stem		4.5	3.75		4	3.5
e. Width of Leaves		4.5	4.25		4.25	4.5
f. Color of leaves		Dark Green			Light Green	
g. Number of cobs		2	1		2	1
h. Length of cobs		4.25,4	3.25		4.25,3.5	3.5

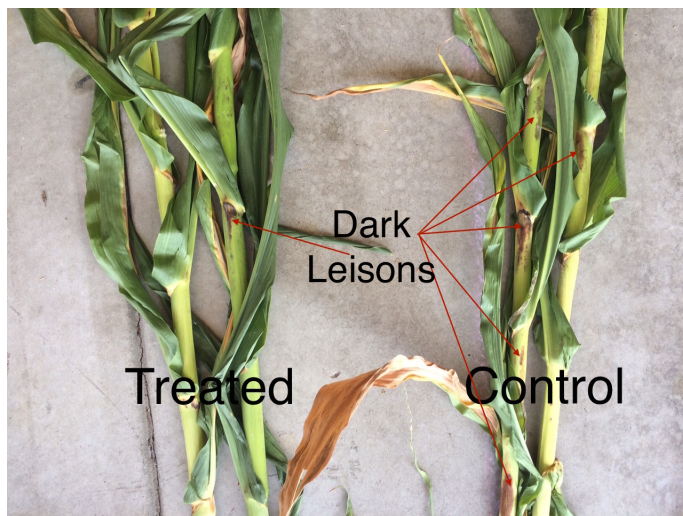


Week 12

-

08/15/2015

		Treated			Control	
		Plant 1	Plant 2		Plant 1	Plant 2
a. Length of Roots		Not Gathered				
b. Length of Plant		96	101		94	88
c. Diameter of stem		3.25	3		2.5	3
d. Width of leaves		4.5	4.25		4.25	4.5
e. Color of leaves		Dark Green			Light Green	
f. Number of cobs		1	1		1	1
g. Length of cobs		7	7		6.25	5.75
h. Cob diameter		4.4	4		4.7	3.5

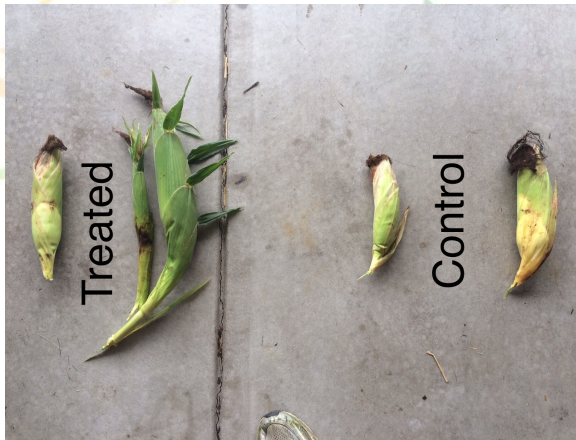


Week 16

-

09/11/2015

	Treated		Control	
	Plant 1	Plant 2	Plant 1	Plant 2
a. Length of Roots	Not Gathered			
b. Length of Plant	95	104	85	97
c. Diameter of stem	3.75	4.5	3.5	3.5
d. Color of leaves	Dark Green		Light Green	
e. Number of cobs	1	2	1	1
f. Length of Cobs	7	4, 8.5	7	7
g. Cob diameter	6.1	3,7.25	5.8	7.1
h. Weight of biomass (both plants together)	6.4 lbs		3.4 lbs	



Harvest – Yield

	Treated	Control
Yield in bushels / acre	125.1	111.2
Yield in lbs / acre (Bushel is volume and conversion depends on commodity. A bushel is 56 lbs of corn)	7005.6	6227.2
Yield in kgs / hectare	7852.21	6979.75

